

玻璃纤维制品

Fiberglass

Mats and Woven Rovings





制毡工艺

编织工艺

Mat Production Process

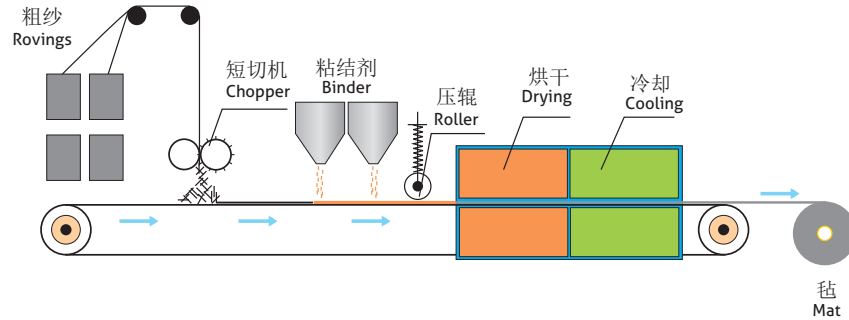
Spray-up Process

制毡工艺

将玻璃纤维纱短切成一定长度，随机沉降在输送带上，然后用粉剂或乳剂粘结剂将这些短切纤维粘结在一起，经过烘干、冷却和卷绕，形成短切原丝毡。

Mat Production Process

Assembled rovings are chopped to a specified length, and then fall onto a conveyor randomly. The chopped strands are bonded together by either an emulsion binder or a powder binder. After drying, cooling and winding, a chopped strand mat is formed.



无碱玻璃纤维乳剂短切原丝毡

无碱玻璃纤维乳剂短切原丝毡是由玻璃纤维原丝经短切后，随机无定向均匀平铺，然后用乳剂粘结剂粘合在一起而制成的片状毡片。可适用于增强UP和VE等。幅宽范围200mm~3120mm，特殊规格可根据客户要求生产。

Emulsion Chopped Strand Mats

Emulsion Chopped Strand Mats are made of randomly distributed chopped strands held together by an emulsion binder. They are compatible with UP and VE resins. The roll width ranges from 200mm to 3,120mm. Special requirements may be available upon request.

产品牌号 Product Code	单位面积克重 Area Weight (g/m ²)	典型幅宽 Typical Width (mm)	适用树脂 Resin Compatibility	产品特点 Product Features
E01	225, 300, 450, 600, 900	1040, 1270	聚酯树脂, 乙烯基树脂 UP, VE	拉伸强度高, 适用于生产面积较大的产品, 操作时无飞扬, 树脂浸穿性好, 浸透速度快, 气泡容易排除, 制品机械强度高, 具有优异的耐酸腐蚀性 <i>High tensile strength, allowing for use in hand lay-up process to produce large-area parts, no airborne fiber when operating, good wet-through and fast wet-out in resins, rapid air lease, high mechanical strength, superior acid corrosion resistance</i>
E10	225, 300, 450, 600, 900	1040, 1270	聚酯树脂, 乙烯基树脂 UP, VE	辊压排泡性非常好, 树脂含量低 <i>Rapid air lease reducing rolling out times, low resin consumption</i>
E20	225, 300, 450, 600, 00	1040, 1270	聚酯树脂, 乙烯基树脂 UP, VE	覆模性好, 树脂浸穿性好, 浸透速度快, 气泡容易排除, 减少辊压次数, 树脂消耗少, 制品机械强度高, 优异的耐酸腐蚀性 <i>Good moldability, good wet-through and fast wet-out in resins, rapid air lease reducing rolling out times and increasing productivity, low resin consumption, high mechanical strength of composite products, superior acid corrosion resistance</i>



无碱玻璃纤维粉剂短切原丝毡

无碱玻璃纤维粉剂短切原丝毡是由玻璃纤维原丝经短切后，随机无定向均匀平铺，然后用粉剂粘结剂粘结在一起而制成的片状毡片。可适用于增强UP、VE、EP和PF等。产品幅宽范围200mm~3120mm，可根据客户的使用要求和习惯，提供不同浸透和分解时间要求的产品。

Powder Chopped Strand Mats

Powder Chopped Strand Mats are made of randomly distributed chopped strands held together by a powder binder. They are compatible with UP, VE, EP and PF resins. The roll width ranges from 200mm to 3,120mm. Additional demands on wet-out and decomposition time can be available upon request.

产品牌号 Product Code	单位面积克重 Area Weight (g/m ²)	典型幅宽 Typical Width (mm)	适用树脂 Resin Compatibility	产品特点 Product Features
P02	225, 300, 450, 600, 900	1040, 1270	聚酯树脂, 乙烯基树脂, 环氧树脂 UP, VE, EP	拉伸强度高, 适用于手糊工艺生产面积较大的制品, 树脂浸穿性好, 浸透速度快, 气泡气容易排除, 制品机械强度高, 优异的耐酸腐蚀性能 <i>High tensile strength, suitable for use in hand lay-up process to produce large-area parts, good wet-through and fast wet-out in resins, rapid air release, high mechanical strength</i>
P20	225, 00, 450, 600, 900	1040, 1270	聚酯树脂, 乙烯基树脂, 环氧树脂 UP, VE, EP	毡质柔软, 覆模性好, 方便手工撕裂, 树脂浸穿性好, 浸透速度快, 气泡容易排除, 减少辊压次数, 树脂消耗少, 制品机械强度高, 优异的耐酸腐蚀性能 <i>Soft mat, ease of manual tearing apart, good conformability, good wet-through and fast wet-out in resins, rapid air release reducing rolling out times and increasing productivity, low resin consumption, high mechanical strength of composite products, superior acid corrosion resistance</i>

制毡工艺的终端应用市场

End-Use Markets

(建筑 / 化学化工 / 船艇 / 基础设施 / 汽车、卡车) (Building and Construction / Chemistry and Chemical / Marine / Infrastructure / Automotive)

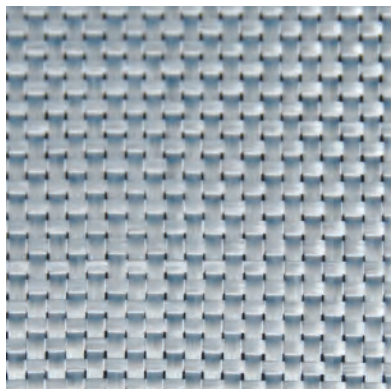
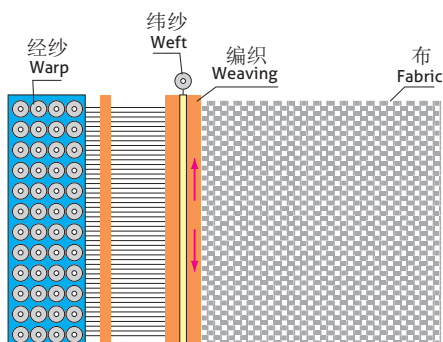


编织工艺

经向和纬向的无捻粗纱以一定的规律交织形成无捻粗纱织物。

Weaving Process

Woven fabrics are made on looms with warp or weft reinforcement threads interlaced with each other in varying configurations to give different fabric styles.



玻璃纤维无捻粗纱布

玻璃纤维无捻粗纱布是适用于增强聚酯树脂、环氧树脂、乙烯基树脂等。玻璃纤维无捻粗纱布单位面积质量范围260g/m²~1600g/m²，幅宽范围50mm~3000mm。

按照组织结构分为：平纹布，斜纹布。特殊规格可根据客户要求生产。

Woven Rovings

Woven Rovings are compatible with UP, VE, EP and PF resins. Woven Rovings are a weight range of 260g/m² ~1,600 g/m² and available with a width range of 50mm~3,000mm. Our products have both plain and twill weaves. Other specifications are also available on customer request.

结构类型 Structure Type	产品牌号 Product Code	单位面积克重 Area Weight (g/m ²)	典型幅宽 Typical Width (cm)	适用树脂 Resin Compatibility	产品特点 Product Features
平纹 Plain	EWR270	261	10, 16, 130	聚酯, 环氧, 乙烯基树脂 UP, EP, VE	适用于手糊工艺, 模压工艺, 浸透快, 力学性能优良 Fast wet-out, excellent mechanical properties, suitable for hand lay-up and compression molding
	EWR300	300	10, 16, 127		
	EWR400	400	40, 100, 127		
	EWR600	600	100, 127		
	EWR800	800	100, 127		
	EWR1000	1000	100, 127, 250		
平纹 Plain	EWR1600	1600	100, 127, 250	环氧树脂 EP	适用于管道接头, 力学性能优良 Excellent mechanical properties, suitable for pipe joints
	EWR270D	261	10, 16, 130		
	EWR360D	364	10, 16, 130		
斜纹 Twill	EWR580D	576	100, 130	聚酯, 环氧, 乙烯基树脂 UP, EP, VE	布面软, 适合加工复杂部件 Soft fabric surface, suitable for fabricating complex parts
	EWR500T3	528	100, 127		
	EWR100T3	1008	100, 127		

编织工艺的终端应用市场

(船艇 / 建筑 / 汽车 / 卡车 / 化学化工 / 电子电气和电信 / 运动休闲 / 风能)

End-Use Markets

(Marine / Building and Construction / Automotive / Chemistry and Chemical / Electrical and Electronics / Sports and Leisure / Wind Energy)



开模成型用玻璃纤维产品 Fiberglass Products for Open Molding	喷射成型工艺 Spray-up Process
	手糊成型工艺 Hand Lay-up Process
管道成型用玻璃纤维产品 Fiberglass Products for Pipes	缠绕成型工艺 Filament Winding Process
	离心浇铸成型工艺 Centrifugal Casting Process
模压成型用玻璃纤维产品 Fiberglass Products for Compression Molding	SMC成型工艺 SMC Process
	BMC成型工艺 BMC Process
	LFI工艺 LFI Process
连续型材用玻璃纤维产品 Fiberglass Products for Continuous Profiles	拉挤成型工艺 Pultrusion Process
	连续板材成型工艺 Continuous Panel Molding Process
热塑性塑料用玻璃纤维产品 Fiberglass Products for Thermoplastics	挤出与注塑工艺 Extrusion and Injection Processes
	LFT成型工艺 LFT Process
	GMT成型工艺 GMT Process
	CFRT成型工艺 CFRT Process
其它玻璃纤维产品 Fiberglass Products for Other Processes	膨化工艺 Texturizing Process
	增强石膏工艺 Reinforcements for Gypsum
	汽车顶棚成型工艺 Automotive Headliner Molding Process
布毡用玻璃纤维产品 Fiberglass Products for Fabrics and Mats	编织工艺 Weaving Process
	制毡工艺 Mat Production Process
玻璃纤维制品 Fiberglass Mats and Woven Rovings	制毡工艺 Mat Production Process
	编织工艺 Weaving Process
高性能复合纤维 High Performance Hybrid Fibers	模压成型 Mold Pressing
	层压板材成型 Laminate Molding
	缠绕成型 Filament Winding
	拉挤成型 Pultrusion
	真空辅助成型 Vacuum-Assisted Molding
连续型玻璃纤维布/纱 Continuous Electronic Glass Fiber Fabric and Yarn	连续型玻璃纤维布 Continuous Electronic Glass Fiber Fabric
	连续型玻璃纤维纱 Continuous Glass Fiber Yarn



地址: 浙江省桐乡市梧桐街道凤凰湖大道318号, 邮编: 314500

Add: 318 Fenghuanghu Avenue, Wutong District, Tongxiang, Zhejiang 314500, China

(国内销售 Domestic Sales)

电话 Tel: +86-573-88181016

传真 Fax: +86-573-88136248

(国际销售 International Sales)

电话 Tel: +86-573-88136318

传真 Fax: +86-573-88181058

(客户服务 Customer Service)

电话 Tel: +86-573-88136325

传真 Fax: +86-573-88136248

http://www.jushi.com E-mail: info@jushi.com



中国巨石官方订阅号
Follow us on WeChat